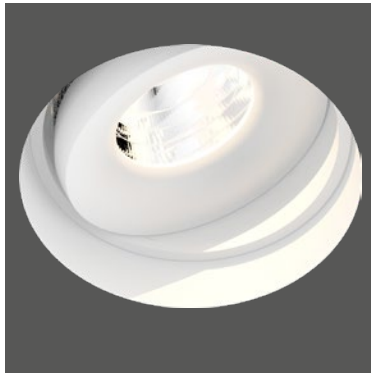


Titan Trimless Deep Organic

Technical Datasheet

DOXIS
LIGHTING FACTORY

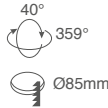
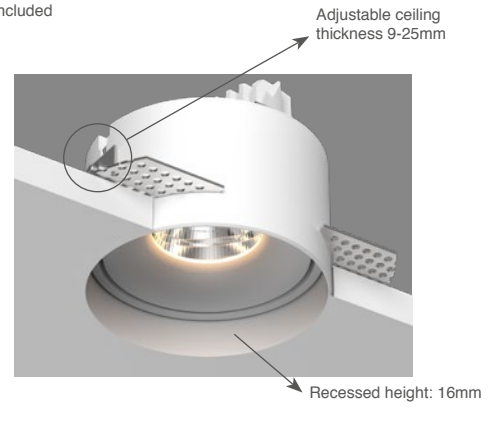


| General | |
|-------------------|--------------------|
| Type | Trimless Downlight |
| Material | Aluminium |
| Lamp Type | COB LED |
| Adjustable | Yes (40°/359°) |
| Dimmable | Yes |
| Cooling | Passive |
| Energy Class | A++ |
| Weight | 380g |
| Photobiol. Safety | RG1 |
| Class (luminaire) | class III |
| Class (driver) | class II |

IP20  960°C  LED

Spot dimensions: Ø84mm x height 82mm
Build-in depth: min. 100mm

Trimless gypkit included



Features:

High efficiency LED Downlight, equipped with a Bridgelux or Dim-to-Warm COB LED.
Trimless gypkit included.
Aluminium die-casted, compact design. High quality components.
Various colors available.

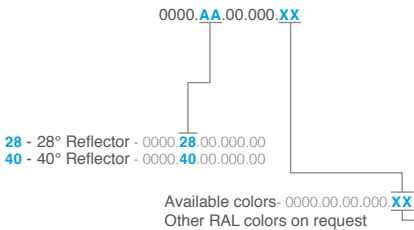
Specifications

| Art. nr. | Lightsource INCLUDED | CCT - CRI | Light output* LED / System | Efficacy** LED / System | Power** LED / System (current) | Power supply INCLUDED | SDCM |
|-------------------|-----------------------|--------------------|----------------------------|-------------------------|--------------------------------|-----------------------------------|------|
| 1020.AA.24.927.XX | Bridgelux Vero 10 LED | 2700K - Ra90 | 1100lm / 937lm | 124lm/W / 92lm/W | 8.9W / 10.2W (350mA) | Non dimmable (490.24.16) | 3 |
| 1020.AA.24.930.XX | Bridgelux Vero 10 LED | 3000K - Ra90 | 1156lm / 984lm | 130lm/W / 96lm/W | 8.9W / 10.2W (350mA) | Non dimmable (490.24.16) | 3 |
| 1020.AA.24.940.XX | Bridgelux Vero 10 LED | 4000K - Ra90 | 1172lm / 998lm | 132lm/W / 98lm/W | 8.9W / 10.2W (350mA) | Non dimmable (490.24.16) | 3 |
| 1020.AA.25.927.XX | Bridgelux Vero 10 LED | 2700K - Ra90 | 1100lm / 937lm | 124lm/W / 92lm/W | 8.9W / 10.2W (350mA) | 1-10V & Push driver (490.25.20) | 3 |
| 1020.AA.25.930.XX | Bridgelux Vero 10 LED | 3000K - Ra90 | 1156lm / 984lm | 130lm/W / 96lm/W | 8.9W / 10.2W (350mA) | 1-10V & Push driver (490.25.20) | 3 |
| 1020.AA.25.940.XX | Bridgelux Vero 10 LED | 4000K - Ra90 | 1172lm / 998lm | 132lm/W / 98lm/W | 8.9W / 10.2W (350mA) | 1-10V & Push driver (490.25.20) | 3 |
| 1020.AA.26.927.XX | Bridgelux Vero 10 LED | 2700K - Ra90 | 1100lm / 937lm | 124lm/W / 92lm/W | 8.9W / 10.2W (350mA) | DALI dimmable (490.26.20) | 3 |
| 1020.AA.26.930.XX | Bridgelux Vero 10 LED | 3000K - Ra90 | 1156lm / 984lm | 130lm/W / 96lm/W | 8.9W / 10.2W (350mA) | DALI dimmable (490.26.20) | 3 |
| 1020.AA.26.940.XX | Bridgelux Vero 10 LED | 4000K - Ra90 | 1172lm / 998lm | 132lm/W / 98lm/W | 8.9W / 10.2W (350mA) | DALI dimmable (490.26.20) | 3 |
| 1020.AA.27.927.XX | Bridgelux Vero 10 LED | 2700K - Ra90 | 1100lm / 937lm | 124lm/W / 92lm/W | 8.9W / 10.2W (350mA) | Mains dimmable driver (490.27.20) | 3 |
| 1020.AA.27.930.XX | Bridgelux Vero 10 LED | 3000K - Ra90 | 1156lm / 984lm | 130lm/W / 96lm/W | 8.9W / 10.2W (350mA) | Mains dimmable driver (490.27.20) | 3 |
| 1020.AA.27.940.XX | Bridgelux Vero 10 LED | 4000K - Ra90 | 1172lm / 998lm | 132lm/W / 98lm/W | 8.9W / 10.2W (350mA) | Mains dimmable driver (490.27.20) | 3 |
| 1020.AA.26.DTW.XX | Bridgelux DTW LED*** | 3000K/1800K - Ra90 | 860lm / 732lm | 105lm/W / 78lm/W | 8.2W / 9.4W (250mA) | DALI dimmable driver (490.26.20) | 3 |
| 1020.AA.27.DTW.XX | Bridgelux DTW LED*** | 3000K/1800K - Ra90 | 860lm / 732lm | 105lm/W / 78lm/W | 8.2W / 9.4W (250mA) | Mains dimmable driver (497.27.20) | 3 |

* LED light output represent values of LED chip. System light output incl. light losses of luminaire (40° reflector used as reference)
** LED power values excl. driver. System power values incl. driver power consumption (driver efficiency of 87% used as reference)
*** Only us drivers with amplitude (AM) dimming for dim-to-warm applications.

| Lumen Maintenance Bridgelux COB LED (Tc=85°C) | | |
|---|----------------------|----------------------|
| L70B50: >100 000 hrs | L70B20: >100 000 hrs | L70B10: >100 000 hrs |
| L80B50: >100 000 hrs | L80B20: >100 000 hrs | L80B10: >100 000 hrs |
| L90B50: >100 000 hrs | L90B20: >50 000 hrs | L90B10: >50 000 hrs |

| Forward voltages (Tc=85°C) | |
|----------------------------|--|
| Bridgelux Vero 10 | 23V.0 (min.) - 25.5V(typ.) - 28.0V(max.) |
| Bridglux DTW | min. power - 1800K: 24.9V (min.) - 26.9V(typ.) - 28.9V(max.) max. power - 3000K: 31.8V (min.) - 33.8V(typ.) - 35.8V(max.) |



Drivers

| Name | Art. nr. | Dimensions | Description |
|---------------------------------|-----------|------------|---|
| Driver "Mono 350" non dim. 16W | 490.24.16 | 147x44x30 | Non dimmable LED Driver |
| Driver "Mono" 1-10V/Push dim. | 490.25.20 | 111x52x22 | 1-10V & Push dimmable LED Driver |
| Driver "Mono" DALI dim. | 490.26.20 | 111x52x22 | DALI dimmable AM LED Driver |
| Driver "Mono 350" mains dim. | 490.27.20 | 102x38x21 | Dimmable LED Driver compatible with trailing-edge & leading-edge dimmers (phase cut-off) |
| Driver "Dim-to-Warm Mono" mains | 497.27.20 | 111x52x22 | Dimmable AM LED Driver compatible with trailing-edge & leading-edge dimmers (phase cut-off) |

Titan with "Organic" frontring:

