

Titan Double Oval

Type Multiple Downlight
 Mounting Recessed
 Material Aluminium
 Adjustable Yes (40°/359°)
 El. class / IP Class III / IP20
 El. class driver Class II
 Warranty: see p.348

Bridgelux Vero 10 LED (350mA)

CCT 2700K / 3000K / 4000K
 CRI Ra90 (Ra80 on request)
 SDCM 3
 Luminous Flux LED
 2700K - Ra90: 1100lm (124lm/W)
 3000K - Ra90: 1156lm (130lm/W)
 4000K - Ra90: 1172lm (132lm/W)
 Luminous Flux System
 2700K - Ra90: 937lm (92lm/W)
 3000K - Ra90: 984lm (96lm/W)
 4000K - Ra90: 998lm (98lm/W)
 Beam angle 28° / 40°
 LED Power 8.9W / 350mA (excl. driver)
 System Power 10.2W / 350mA (incl. driver)
 Forward voltage 23V (min.) - 25.5V (typ.) - 28V (max.)

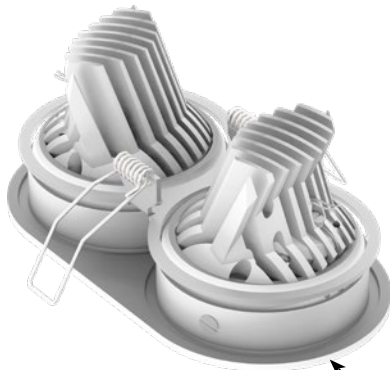
Bridgelux Dim-to-warm LED (more info see p.330)

CCT Dim-to-warm 1800-3000K
 CRI Ra90
 Luminous Flux LED: 860lm - System: 732lm
 LED Power 8.2W / 250mA (excl. driver)
 System Power 9.4W / 250mA (incl. driver)

DIM TO WARM



Height: 75mm
 Build-in depth: 95mm



Weight: 880g
 (excl. driver)

Outside measurements:
 172mm x 92mm



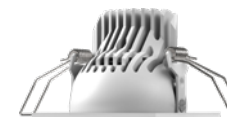
Driver:
 - Included in article number and included in price
 - External/Remote installation

Data sheets and wiring guide: see website
 Driver information: see p.334-335

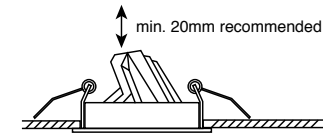
On Request
 LED with CRI Ra97
 Class A LED

Air circulation notice:

Do not topload with insulation materials



BOOBYTRAP SPRINGS



Ceiling thickness min. 9mm



Titan Double Oval

Cone

PRICES INCL. DRIVERS

Non dim (2x Driver 490.24.16 incl.)
 (2x) 2700K - Ra90 - 10.2W - 937lm 1103.AA.24.927.XX
 (2x) 3000K - Ra90 - 10.2W - 984lm 1103.AA.24.930.XX
 (2x) 4000K - Ra90 - 10.2W - 998lm 1103.AA.24.940.XX

1-10V dim & Push dim (2x Driver 490.25.20 incl.)
 (2x) 2700K - Ra90 - 10.2W - 937lm 1103.AA.25.927.XX
 (2x) 3000K - Ra90 - 10.2W - 984lm 1103.AA.25.930.XX
 (2x) 4000K - Ra90 - 10.2W - 998lm 1103.AA.25.940.XX

DALI dim (2x Driver 490.26.20 incl.)
 (2x) 2700K - Ra90 - 10.2W - 937lm 1103.AA.26.927.XX
 (2x) 3000K - Ra90 - 10.2W - 984lm 1103.AA.26.930.XX
 (2x) 4000K - Ra90 - 10.2W - 998lm 1103.AA.26.940.XX

Mains dim (2x Driver 490.27.20 incl.)
 (2x) 2700K - Ra90 - 10.2W - 937lm 1103.AA.27.927.XX
 (2x) 3000K - Ra90 - 10.2W - 984lm 1103.AA.27.930.XX
 (2x) 4000K - Ra90 - 10.2W - 998lm 1103.AA.27.940.XX

DALI dim / Dim to Warm 1800-3000K (2x Driver 490.26.20 incl.)
 (2x) DTW (DALI dim) - 9.4W - 732lm 1103.AA.26.dtw.XX

Mains dim / Dim to Warm 1800-3000K (2x Driver 497.27.20 incl.)
 (2x) DTW (mains dim) - 9.4W - 732lm 1103.AA.27.dtw.XX



Titan Double Oval

Organic

PRICES INCL. DRIVERS

Non dim (2x Driver 490.24.16 incl.)
 (2x) 2700K - Ra90 - 10.2W - 937lm 1105.AA.24.927.XX
 (2x) 3000K - Ra90 - 10.2W - 984lm 1105.AA.24.930.XX
 (2x) 4000K - Ra90 - 10.2W - 998lm 1105.AA.24.940.XX

1-10V dim & Push dim (2x Driver 490.25.20 incl.)
 (2x) 2700K - Ra90 - 10.2W - 937lm 1105.AA.25.927.XX
 (2x) 3000K - Ra90 - 10.2W - 984lm 1105.AA.25.930.XX
 (2x) 4000K - Ra90 - 10.2W - 998lm 1105.AA.25.940.XX

DALI dim (2x Driver 490.26.20 incl.)
 (2x) 2700K - Ra90 - 10.2W - 937lm 1105.AA.26.927.XX
 (2x) 3000K - Ra90 - 10.2W - 984lm 1105.AA.26.930.XX
 (2x) 4000K - Ra90 - 10.2W - 998lm 1105.AA.26.940.XX

Mains dim (2x Driver 490.27.20 incl.)
 (2x) 2700K - Ra90 - 10.2W - 937lm 1105.AA.27.927.XX
 (2x) 3000K - Ra90 - 10.2W - 984lm 1105.AA.27.930.XX
 (2x) 4000K - Ra90 - 10.2W - 998lm 1105.AA.27.940.XX

DALI dim / Dim to Warm 1800-3000K (2x Driver 490.26.20 incl.)
 (2x) DTW (DALI dim) - 9.4W - 732lm 1105.AA.26.dtw.XX

Mains dim / Dim to Warm 1800-3000K (2x Driver 497.27.20 incl.)
 (2x) DTW (mains dim) - 9.4W - 732lm 1105.AA.27.dtw.XX



Titan Double Oval

Anti-glare

PRICES INCL. DRIVERS

Non dim (2x Driver 490.24.16 incl.)
 (2x) 2700K - Ra90 - 10.2W - 937lm 1104.AA.24.927.XX
 (2x) 3000K - Ra90 - 10.2W - 984lm 1104.AA.24.930.XX
 (2x) 4000K - Ra90 - 10.2W - 998lm 1104.AA.24.940.XX

1-10V dim & Push dim (2x Driver 490.25.20 incl.)
 (2x) 2700K - Ra90 - 10.2W - 937lm 1104.AA.25.927.XX
 (2x) 3000K - Ra90 - 10.2W - 984lm 1104.AA.25.930.XX
 (2x) 4000K - Ra90 - 10.2W - 998lm 1104.AA.25.940.XX

DALI dim (2x Driver 490.26.20 incl.)
 (2x) 2700K - Ra90 - 10.2W - 937lm 1104.AA.26.927.XX
 (2x) 3000K - Ra90 - 10.2W - 984lm 1104.AA.26.930.XX
 (2x) 4000K - Ra90 - 10.2W - 998lm 1104.AA.26.940.XX

Mains dim (2x Driver 490.27.20 incl.)
 (2x) 2700K - Ra90 - 10.2W - 937lm 1104.AA.27.927.XX
 (2x) 3000K - Ra90 - 10.2W - 984lm 1104.AA.27.930.XX
 (2x) 4000K - Ra90 - 10.2W - 998lm 1104.AA.27.940.XX

DALI dim / Dim to Warm 1800-3000K (2x Driver 490.26.20 incl.)
 (2x) DTW (DALI dim) - 9.4W - 732lm 1104.AA.26.dtw.XX

Mains dim / Dim to Warm 1800-3000K (2x Driver 497.27.20 incl.)
 (2x) DTW (mains dim) - 9.4W - 732lm 1104.AA.27.dtw.XX

28° Reflector: 0000.28.00.000.00
 40° Reflector: 0000.40.00.000.00

Available colors: 0000.00.00.000.XX
 Other RAL colors on request



01
White Matt Text.
Standard



18
Grey Matt Text.
Standard



03
Black Matt Text.
Standard



25
Smoked Brown Text.
Standard



11
Black + Gold Matt
Standard



16
Gold Matt
Standard