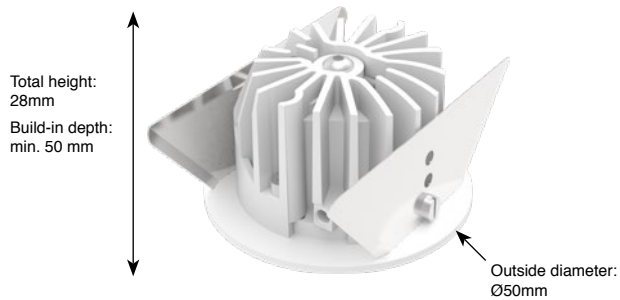
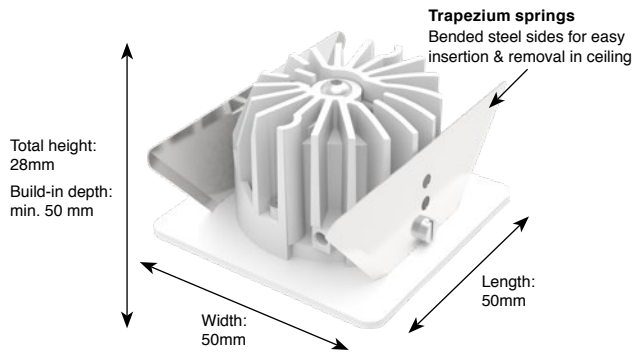


Juno Orientation

Type Orientation lighting
 Mounting Recessed
 Material Aluminium
 Adjustable No
 El. class / IP Class III / IP20
 El. class driver Class II
 Warranty: see p.348

Bridgelux Vero 10 LED (150mA)

CCT 2700K / 3000K / 4000K
 CRI Ra90 (Ra80 on request)
 SDCM 3
 Luminous Flux LED
 2700K - Ra90: 458lm (127lm/W)
 3000K - Ra90: 476lm (132lm/W)
 4000K - Ra90: 487lm (135lm/W)
 Luminous Flux System
 2700K - Ra90: 380lm (95lm/W)
 3000K - Ra90: 400lm (100lm/W)
 4000K - Ra90: 409lm (102lm/W)
 LED Power 3.6W (excl. driver)
 System Power 4.1W (incl. driver)
 Current 150mA
 Forward voltage 21.4V (min.) - 24V (typ.) - 26.5V (max.)



**Weight: 200g
(excl. driver)**



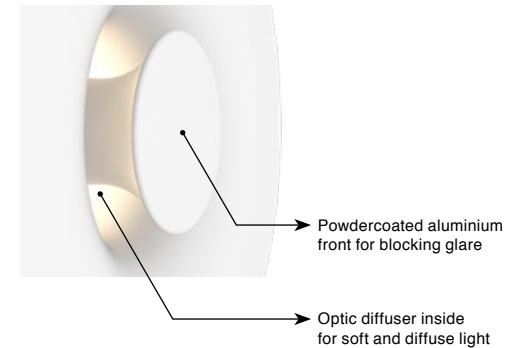
Driver:
 - Included in article number and included in price
 - External/Remote installation

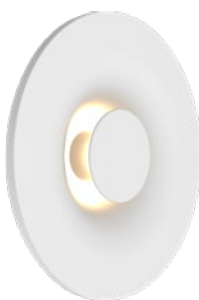
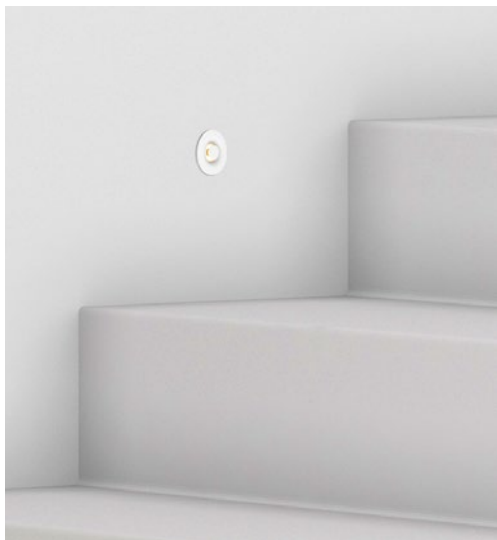
**Data sheets and wiring guide: see website
 Driver information: see p.334-335**

On Request

LED with CRI Ra97
 Class A LED

Detail:





Juno Orientation

Round

PRICES INCL. DRIVERS

Soft Beam / Non dim (Driver 494.24.06 incl.)

2700K - Ra90 - 4.1W - 380lm

1509.44.24.927.XX

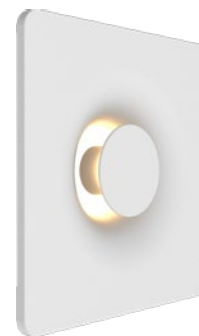
3000K - Ra90 - 4.1W - 400lm

1509.44.24.930.XX

4000K - Ra90 - 4.1W - 409lm

1509.44.24.940.XX

Dimmable drivers available for remote placement see p.334-335



Juno Orientation

Square

PRICES INCL. DRIVERS

Soft Beam / Non dim (Driver 494.24.06 incl.)

2700K - Ra90 - 4.1W - 380lm

1508.44.24.927.XX

3000K - Ra90 - 4.1W - 400lm

1508.44.24.930.XX

4000K - Ra90 - 4.1W - 409lm

1508.44.24.940.XX

Available colors: 0000.00.00.000.XX
Other RAL colors on request

01



White Matt Text.
Standard

18



Grey Matt Text.
Standard

03



Black Matt Text.
Standard

25



Smoked Brown Text.
Standard

16



Gold Matt